



OAKTON MONUMENT SIGNAGE - BOARD PRESENTATION 2017.01.17

MONUMENT SIGNAGE OPTIONS OVERVIEW



OPTION 1



OPTION 2

SCULPTURAL



OPTION 3



OPTION 4

MONUMENT SIGNAGE OPTIONS OVERVIEW



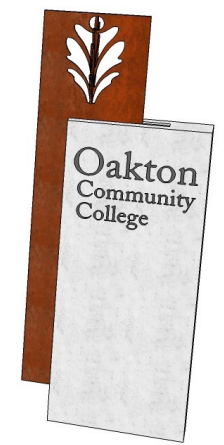
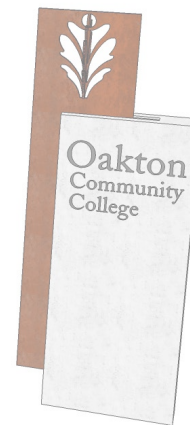
OPTION 1

OPTION 2

OPTION 3

OPTION 4

SCULPTURAL



OPTION 1
1-SIDED FACE

OPTION 2
WEDGE & 3D LEAF

OPTION 3
V - SHAPE & 3D LEAF

OPTION 2 - WEATHERED STEEL

PRECEDENT IMAGERY & MATERIAL SELECTION



COR-TEN STEEL (WEATHERED STEEL)

- TIMELESS MATERIAL THAT CREATES AN ORGANIC PROTECTIVE COATING WILL AGE AND BECOME STRONGER WITH TIME

- THE PATINA IS GENERATED FROM ENVIRONMENTAL INFLUENCES



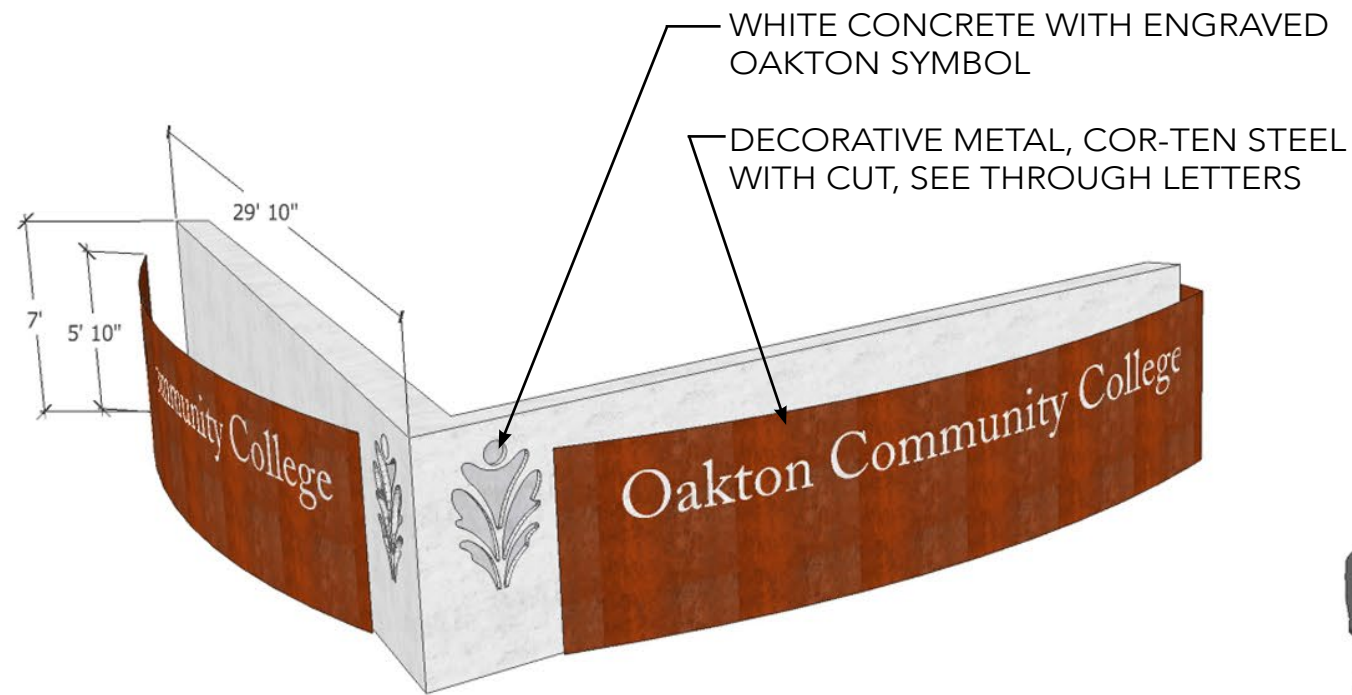
WHITE CONCRETE

- STRONG DURABLE MATERIAL
- MARBLE LIKE APPEARANCE



WEATHERED STEEL

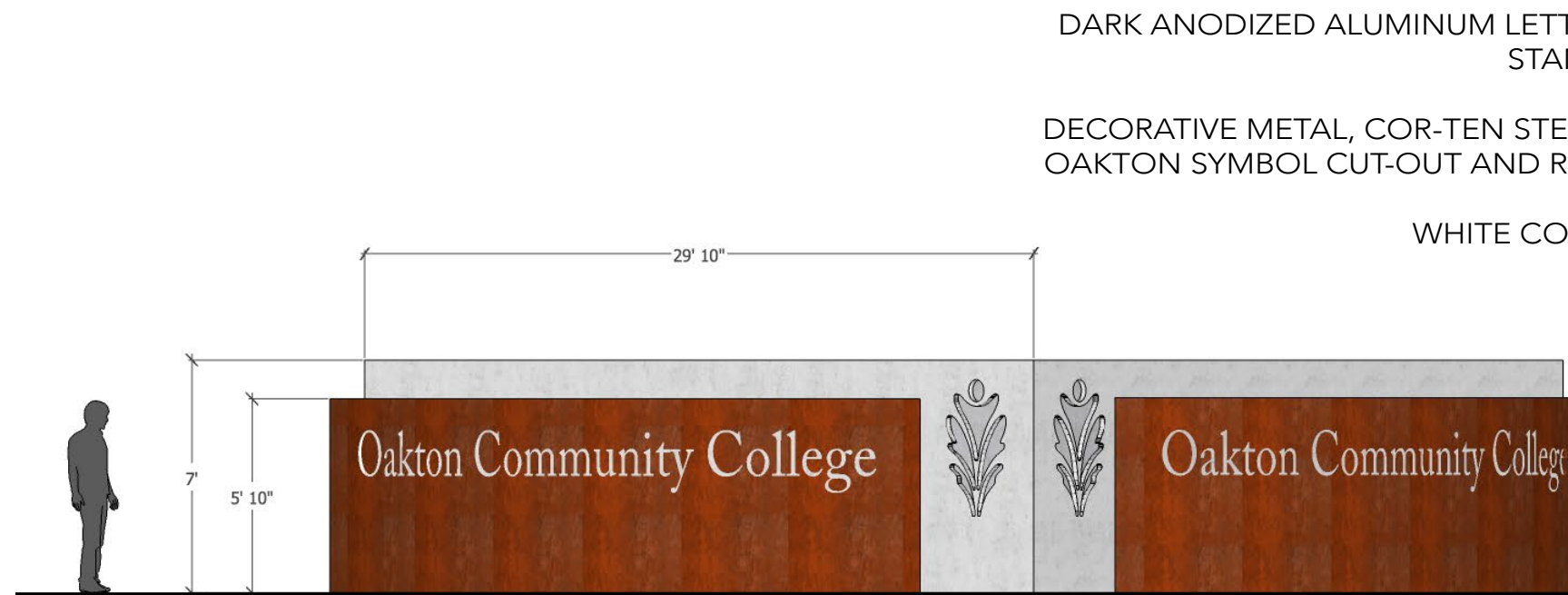
V SHAPE & 3D LOGO



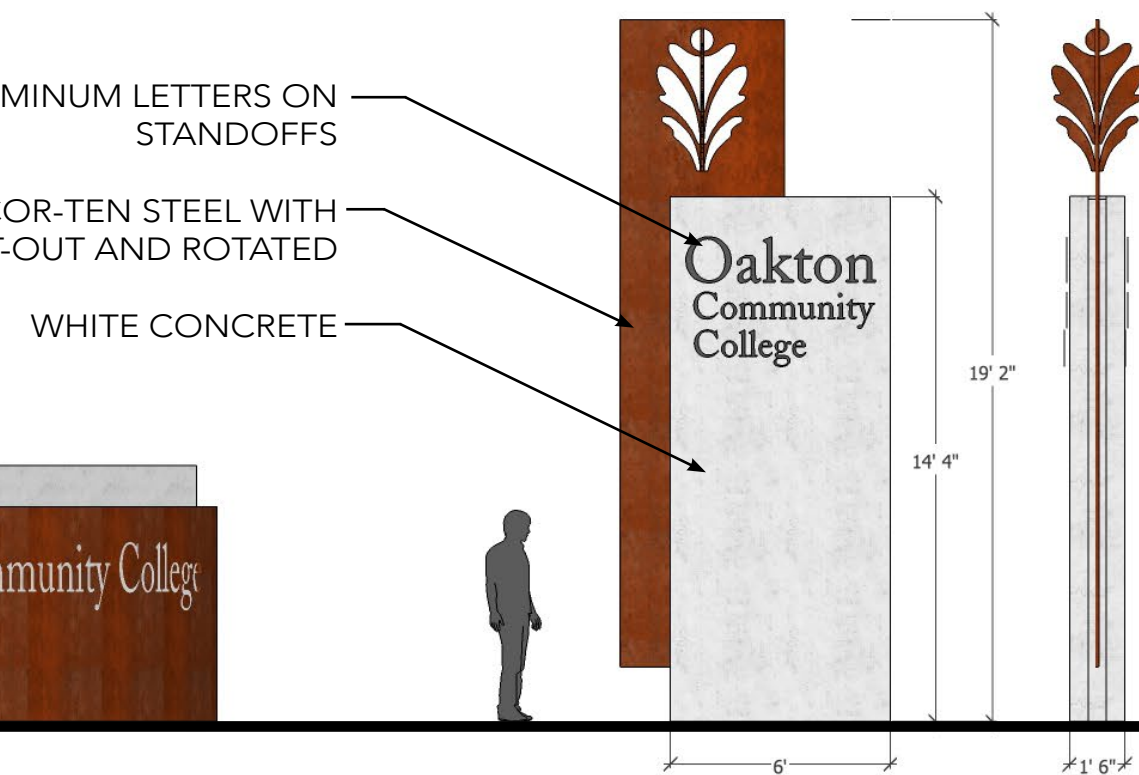
GOLF ROAD SIGN



CENTRAL RD & COLLEGE DR. SIGN



GOLF ROAD SIGN



CENTRAL RD & COLLEGE DR. SIGN

WEATHERED STEEL - ORIGINAL DESIGN

HORIZONTAL - GOLF RD ENTRY SIGN



ENGRAVED CONCRETE OAKTON SYMBOL WITH CONTRASTING COLOR

CUT METAL LETTERING WITH BACKLIT CONCRETE WALL



WEATHERED STEEL

SIGN DETAILS - VERTICAL SIGN 3D LEAF

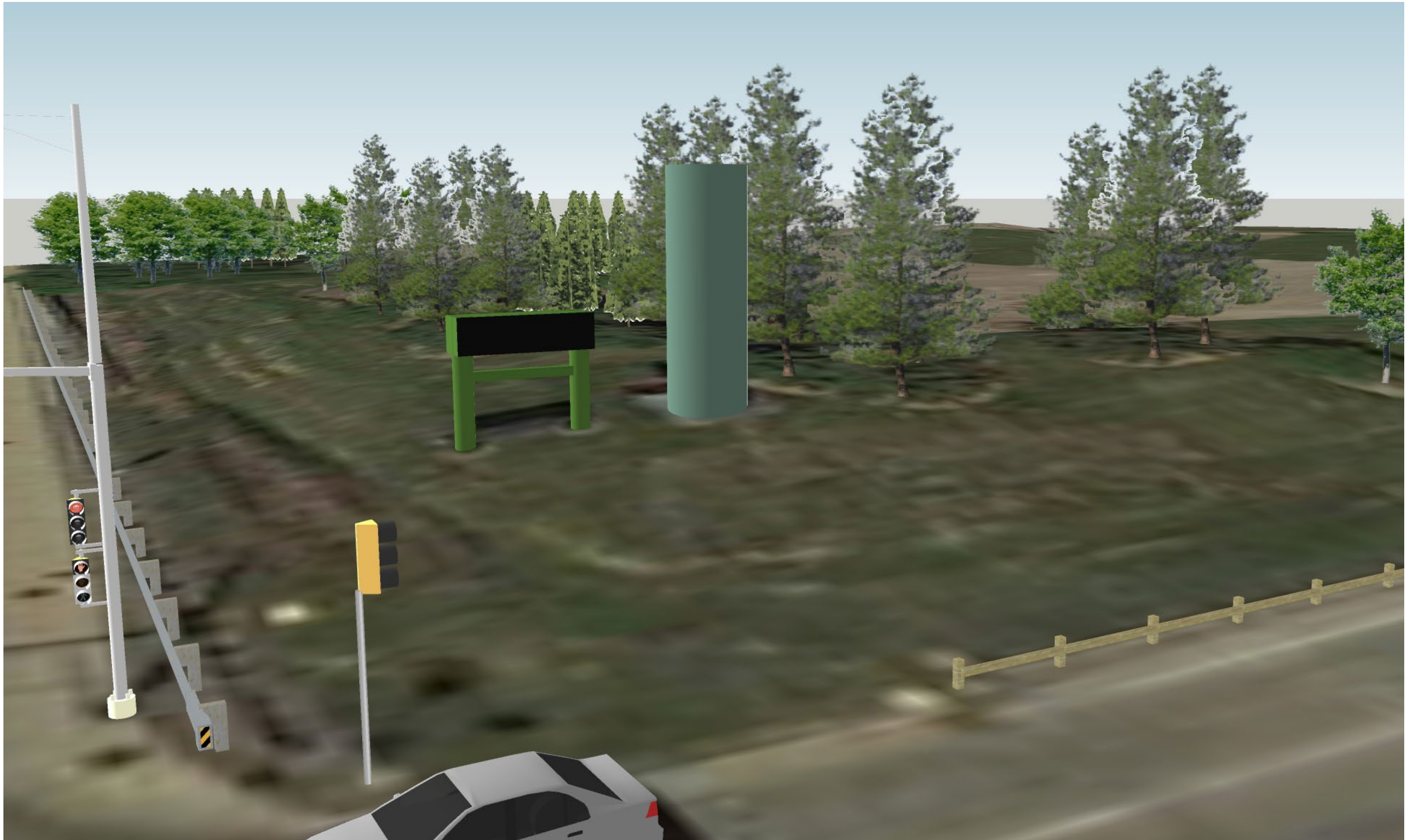


DARK ANODIZED ALUMINUM LETTERING ON STANDOFFS

CENTRAL RD. & COLLEGE DR. PROFILE VIEW OF VERTICAL SIGN

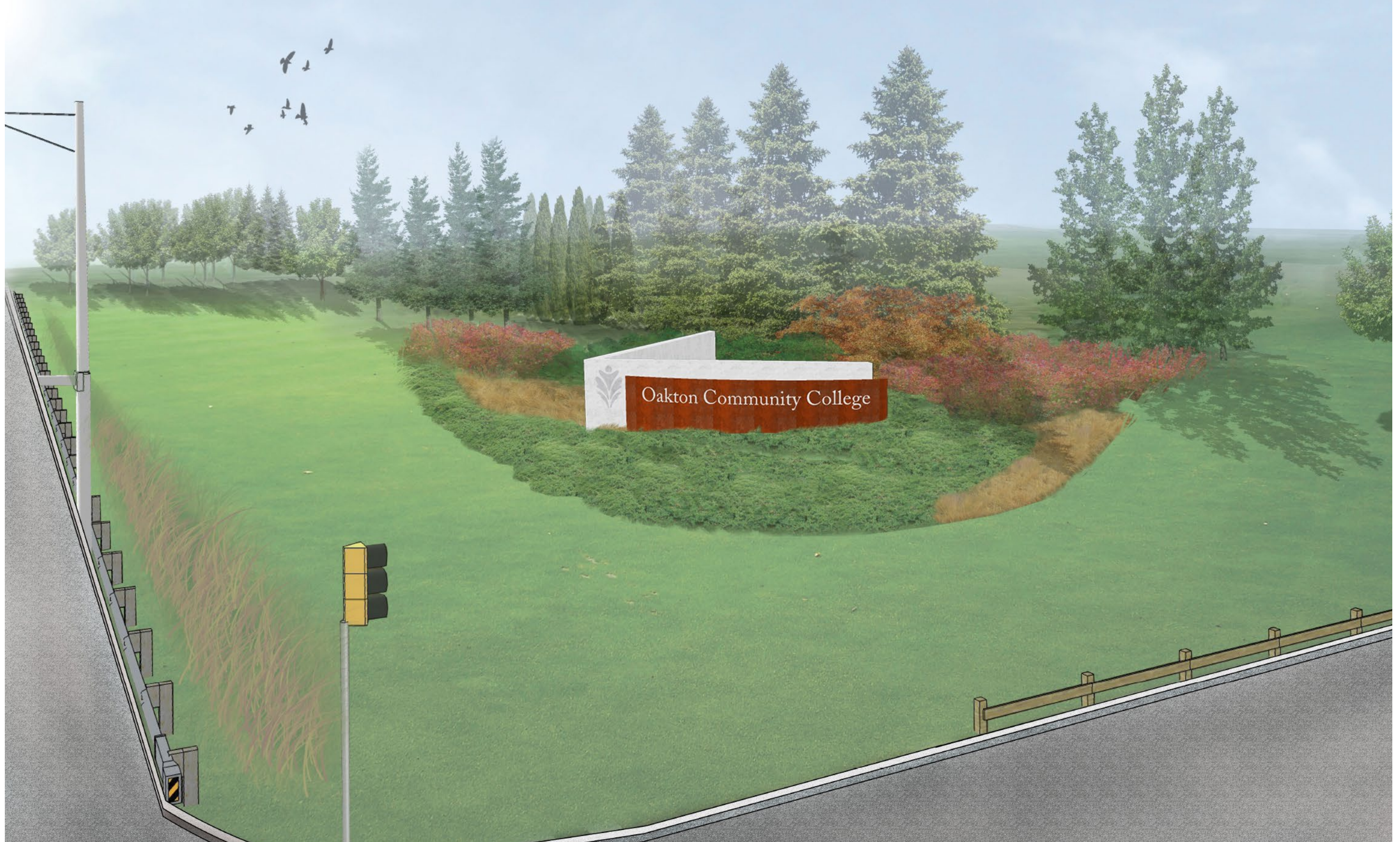
MAIN ENTRY

GOLF ROAD EXISTING CONDITIONS



MAIN ENTRY - LANDSCAPING

GOLF ROAD PROPOSED SIGNAGE



MAIN ENTRY

GOLF ROAD RENDERING



MAIN ENTRY

GOLF ROAD RENDERING



MAIN ENTRY

GOLF ROAD RENDERING



NORTH ENTRY

CENTRAL ROAD EXISTING CONDITIONS



NORTH ENTRY

CENTRAL ROAD RENDERING



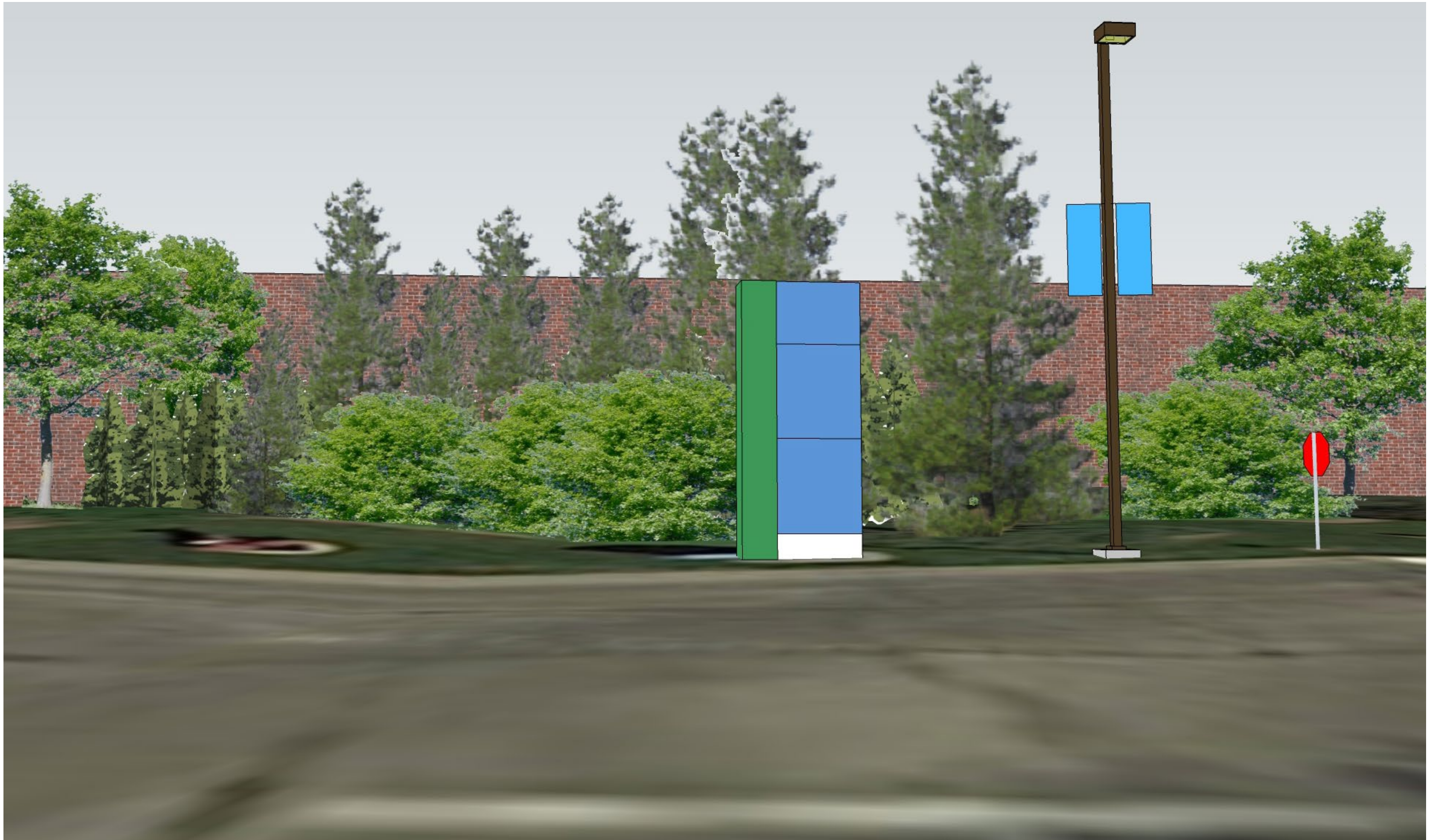
NORTH ENTRY

CENTRAL DRIVE RENDERING



NORTH ENTRY

COLLEGE DRIVE EXISTING CONDITIONS



OPTION 2 - COLLEGE DRIVE

COLLEGE DRIVE RENDERING



MAIN ENTRY

GOLF ROAD NIGHT RENDERING

